



## **Logistics** *Infrastructure & Solutions*

*Facilities, Services, Staff, Equipment & Operations*



# Premises Overview



## Overview:

1. **BCN First-Line Warehouse:** 1,400 sqm (Direct Tarmac Access)
2. **BCN Second Line Warehouse:** 5,000 sqm (Cargo Handling & Storage)
3. **AGP First-Line Warehouse:** *(Pending Confirmation – Expected Services (Similar to Those in BCN))*

FCL 2 WH



FCL 1 WH

# **BCN** *First Line* **Warehouse**



**Security Inspections:** X-ray, EDD (Explosive Detection Dogs), ETD (Explosive Trace Detection)

**Cargo Handling:** Import & Export Cargo Reception (Customers, Forwarders, Airlines)

**Temperature-Controlled Storage:**

- +15+25°C & +2+8°C for Pharma
- Frozen Storage up to -30°C

**Dangerous Goods (DGR) Handling**

**ULD Build-up & Handling**

*Daily Connections: BCN-MAD / MAD-BCN - MAD-AGP / AGP-MAD*



# BCN Second Line Warehouse



**Security Inspection:** EDD (Explosive Detection Dogs)

**Cargo Reception & Processing:** Import & Export Shipments

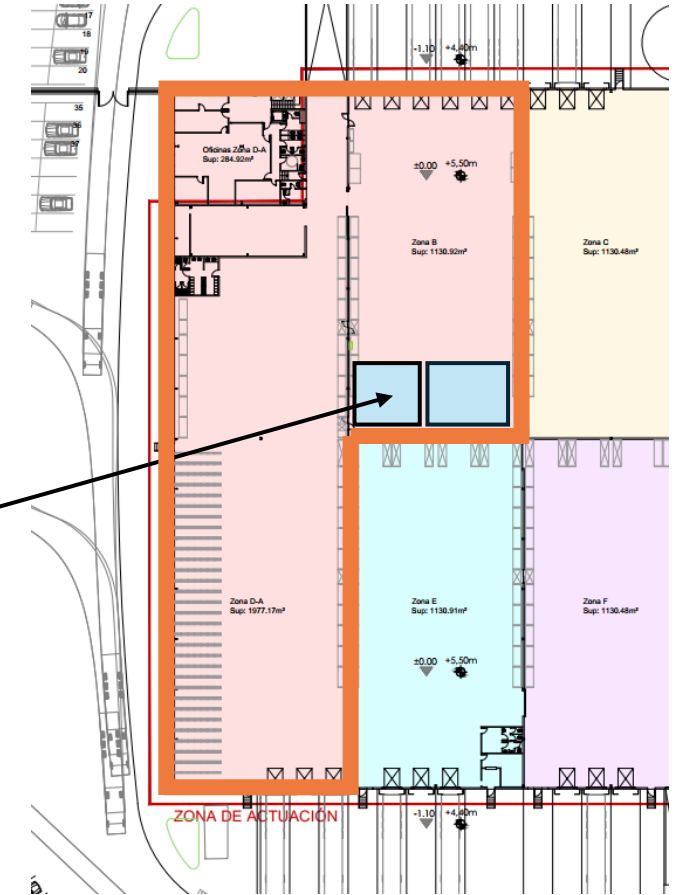
**Temperature-Controlled ULD Storage:**

- Passive & Active (Envirotainer, Va-Q-Tec, C-Safe)

**ULD Build-up & Cargo Transfers:**

## Upcoming Expansions

- Pharma Cold Chamber (220 sqm, 15-25°C)
- Perishables Cold Chamber (80 sqm, 2-8°C & 15-25°C)





# Madrid *Second Line* Warehouse



**Security Inspection:** X-RAY, EDT, EDD (Explosive Detection Dogs)

**Cargo Reception & Processing:** Import & Export Shipments

**Temperature-Controlled ULD Storage:**

- Passive & Active (Envirotainer, Va-Q-Tec, C-Safe)

**Temperature-Controlled Storage:**

- +15+25°C for Pharma

**ULD Build-up & Cargo Transfers**

**Upcoming Expansions**

- Forecast of opening our terminal on the first line



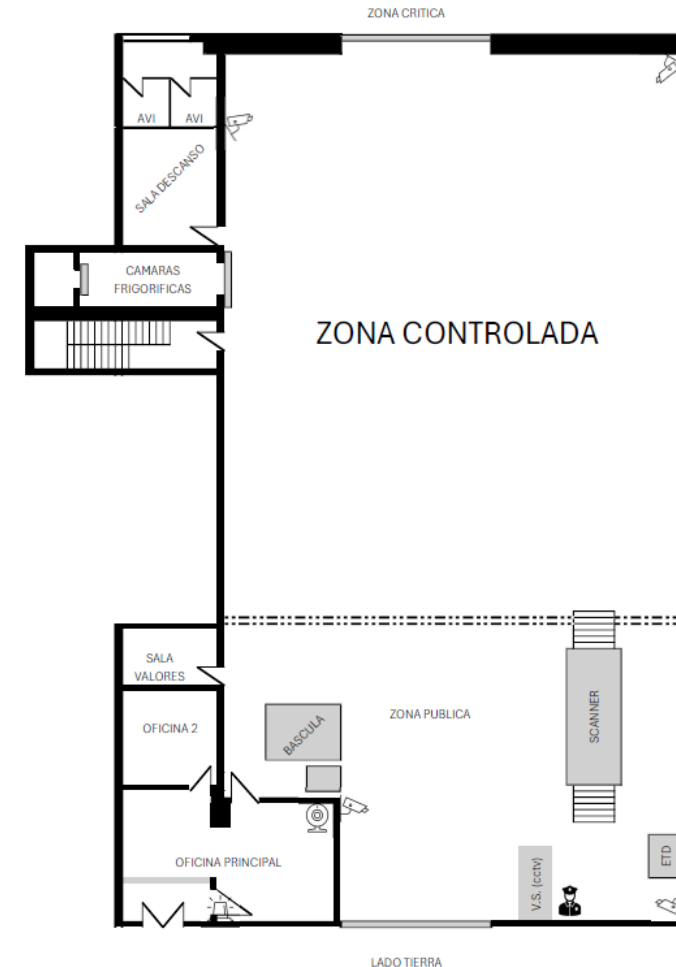
# AGP *First Line* Warehouse



## Capacity & Equipment Details To Be Confirmed

### Expected Services (Similar to BCN)

- Import & Export Cargo Reception
- Security Screening & DGR Handling
- Temperature-Controlled Storage
- ULD Build-up & Cargo Transfers



# Staff and Expertise



*Over 20 years in Air Cargo & Logistics Operations*

## **Certifications & Specialized Training:**

- DGR-Certified Personnel (Dangerous Goods Handling)
- 24/7/365 Operations at Tarmac
- 24/7/365 Security Staff

## **Advanced Equipment for Cargo Handling:**

- Forklifts up to 10 TN
- Roller Bed Docks
- Scales up to 10 TN
- Cargo Dollies & Tow Tractors



# Security and Fleet

## Security Screening Equipment

Dual-View X-ray Scanner (Model to be added)

ETD (Explosive Trace Detection – Model to be added)

EDD (Explosive Detection Dogs)

## Temperature-Controlled Fleet

GPS-Tracked Trucks (Rollerbed) for Inter-Warehouse Transfers

Real-Time Cold Chain Monitoring

*All vehicles are equipped with GPS tracking and live monitoring*





# Certifications *and* Authorizations



## Certifications & Authorizations

- GDP (Good Distribution Practice) – Warehouse & Transport
- ADT (Bonded Warehouse, BCN & MAD)
- OEA & Customs (Authorized Economic Operator)
- ISO 9001 (Quality Management)
- UNE 9120 (Aerospace Supply Chain Standard)
- RA (Regulated Agent, Both Locations)

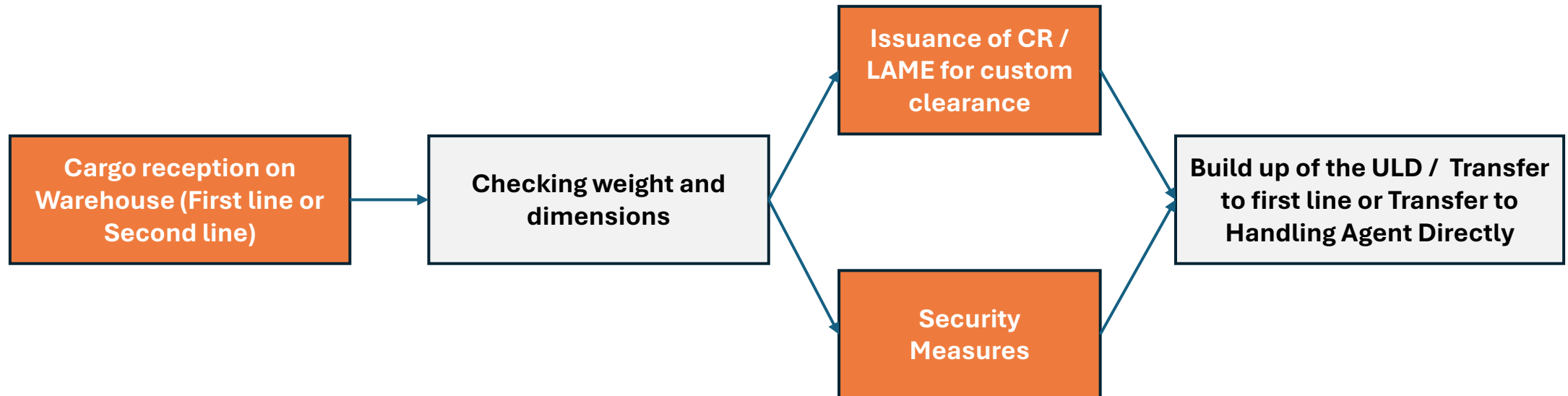


## AGP Premises (Pending Certification for):

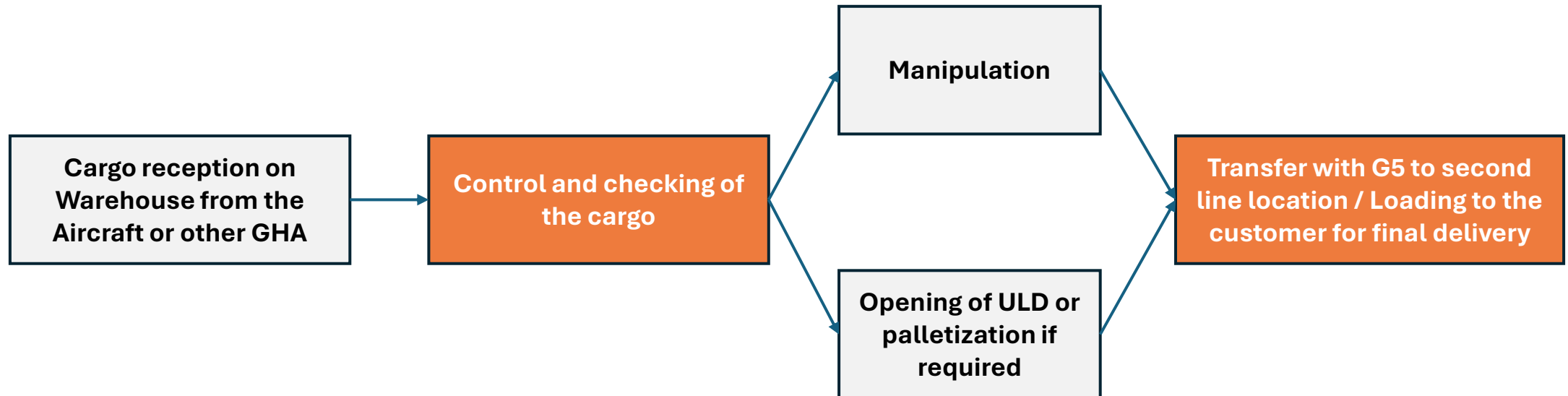
- ADT & RA
- OEA & Customs (Authorized Economic Operator)



# Export Cargo Flow



# *Import* Cargo Flow





# **FCL**

## **Aircargo & Aerospace**

***Pharma, air cargo, shipment supervision, 24/7  
service, and accompanied hand courier***

**[info@fcl.aero](mailto:info@fcl.aero)**